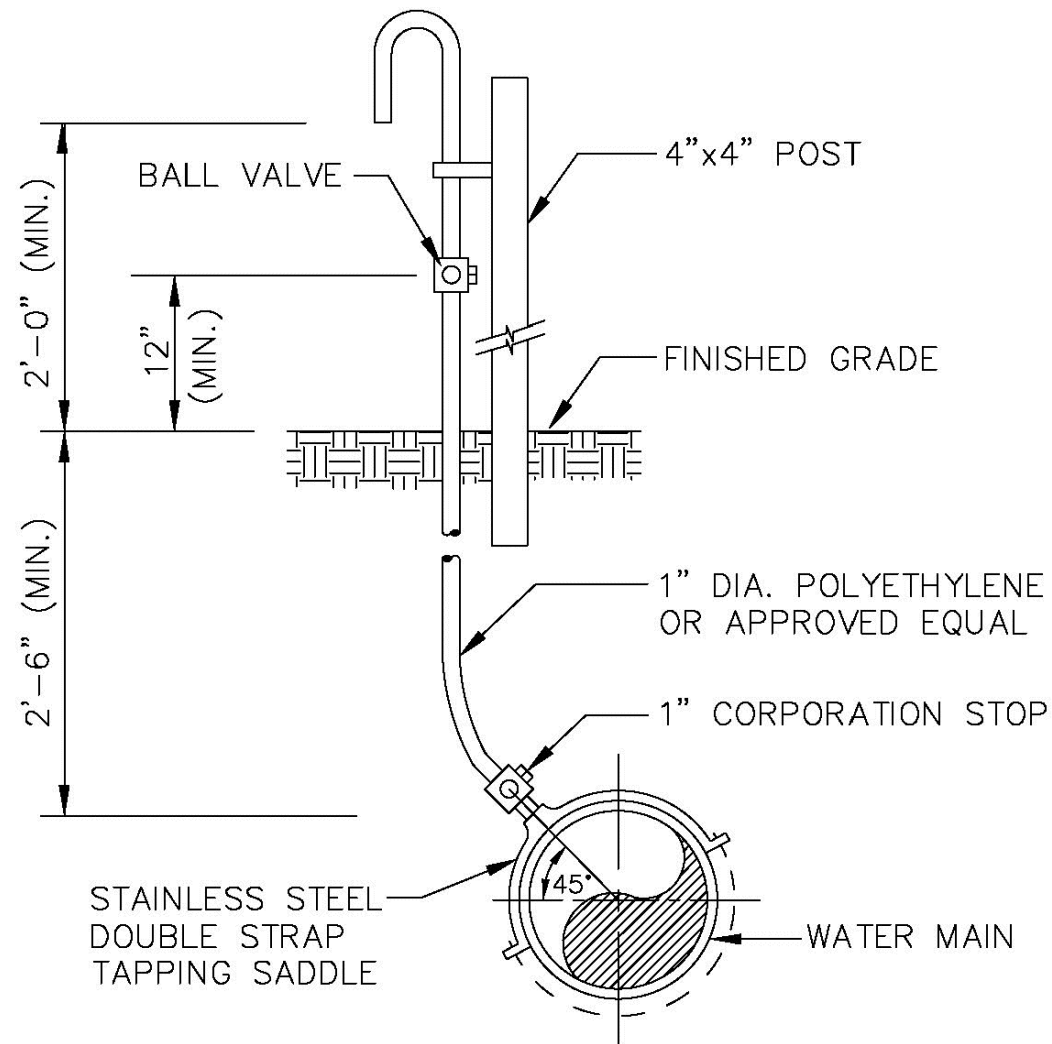


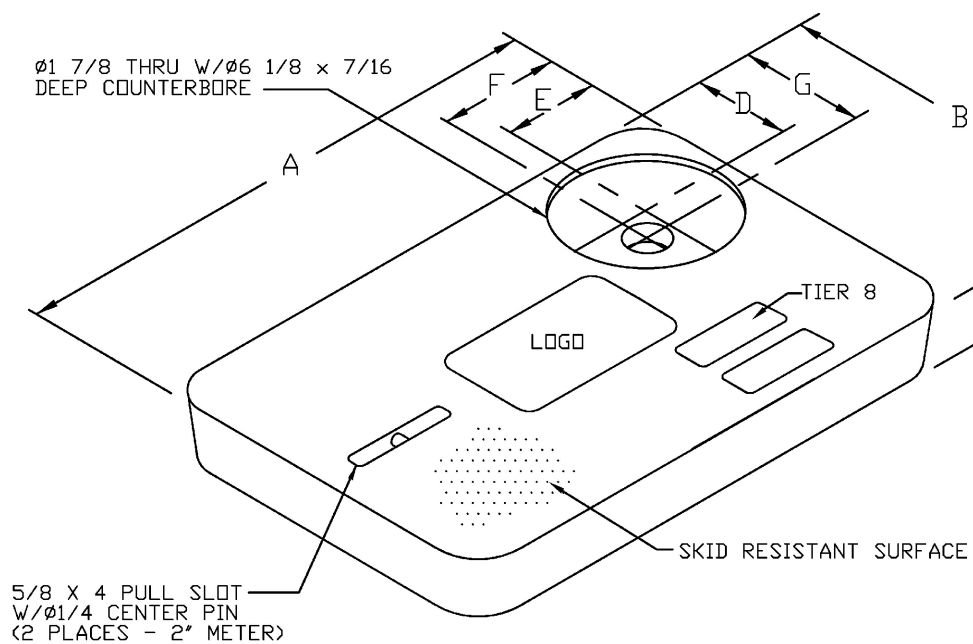
Plotted: 09/09/25 - 12:33 PM, By: centroom, Product Ver: 25.0  
File: F:\DESPC PROJECTS\5758 UT 20 LLC\25-01613 Pompano Beach, FL\Dwg\Entitlements\05758250161352.dwg, ----> C4.02 UTILITY DETAILS



### SAMPLE POINT ( MAIN )

ALL D.I.P. TO BE PAINTED  
BLUE ON TOP HALF OF PIPE.

ENGINEERING STANDARDS 2025			
REVISIONS	BY	DATE	
	S.S.	04-2005	
ENGINEERING DIVISION CITY OF POMPAÑO BEACH			
SCALE: N.T.S.			
SAMPLE POINT (MAIN)			
			DATE: MAY 2022 DWG. NO. 100-1



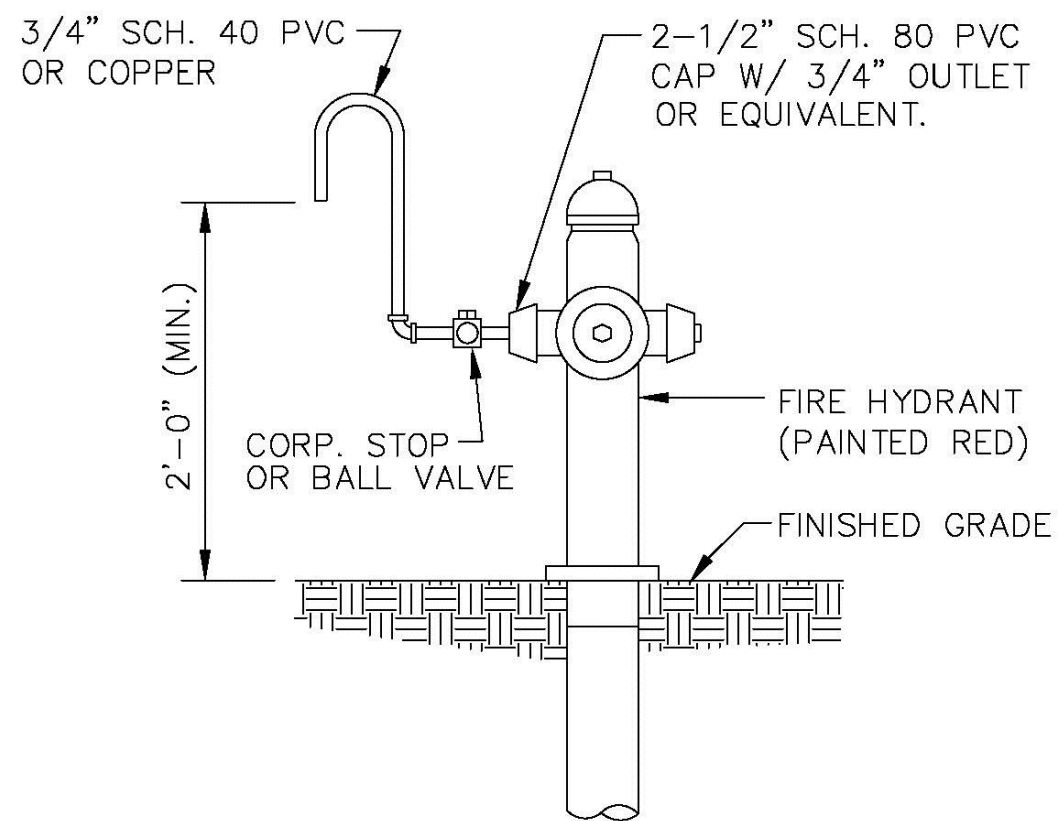
METER BOX COVER DIMENSIONS (IN)							
METER SIZE	A	B	C	D	E	F	G
1"	18 1/8"	11 1/4"	1 3/4"	3 3/4"	4"	4 9/16"	4 5/16"
1 1/2"	23 1/4"	13 3/4"	2"	4"	4"	4 9/16"	4 9/16"
2"	30 1/2"	17 1/2"	2"	4"	4"	4 9/16"	4 9/16"

#### NOTES

- CUSTOMER IS CITY OF POMPAÑO BEACH FLORIDA  
LOGO TO BE SPECIFIED: CITY OF POMPAÑO BEACH POTABLE WATER
- FITS NEPTUNE R450 ANTENNA
- THIS COVER IS RATED FOR A STATIC DESIGN LOAD OF 8,000 LBS. (35,548 N)  
OVER A 10 (254) X 10 (254) AREA AND MUST PASS A MINIMUM STATIC TEST  
LOAD OF 12,000 LBS (53,378 N).
- METER BOX COVER SHOULD BE RATED FOR TRAFFIC CONDITION AS  
DETERMINED BY ENGINEER OF RECORD.

### POTABLE WATER METER BOX COVER

ENGINEERING STANDARDS 2025			
REVISIONS	BY	DATE	
	S.S.	11-2012	
ENGINEERING DIVISION CITY OF POMPAÑO BEACH			
SCALE: N.T.S.			
TYPICAL METER BOX COVER			
			DATE: JAN. 2022 DWG. NO. 105-3

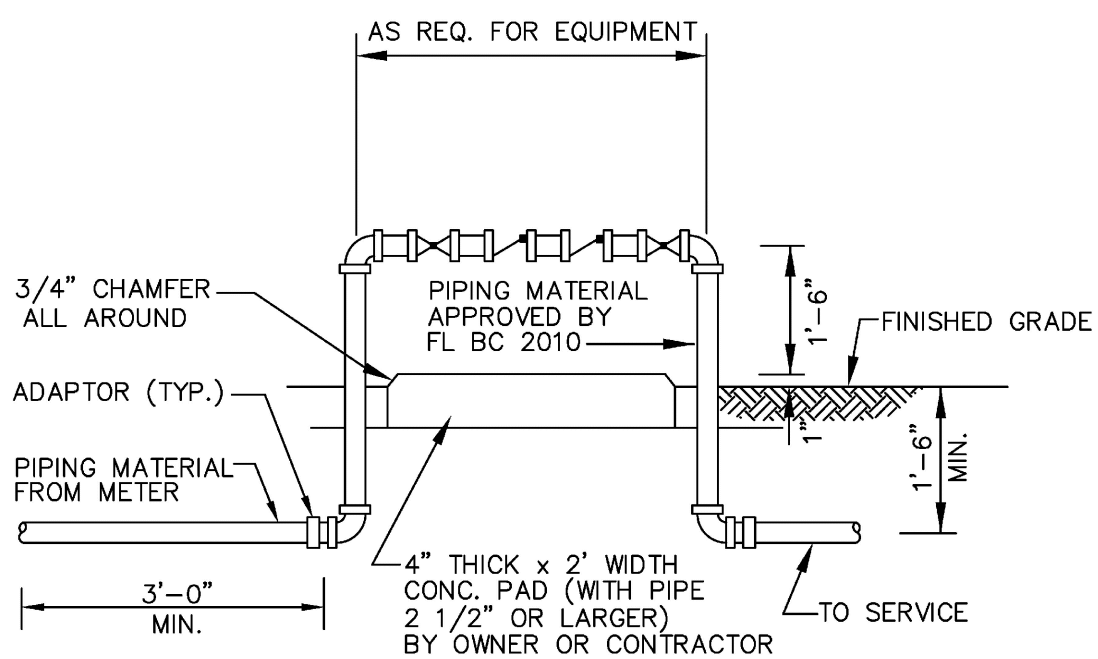


### SAMPLE POINT ( HYDRANT )

ALL POMPAÑO BEACH HYDRANTS SHALL BE PAINTED RED.

ENGINEERING STANDARDS 2025			
REVISIONS	BY	DATE	
	S.S.	04-2005	
ENGINEERING DIVISION CITY OF POMPAÑO BEACH			
SCALE: N.T.S.			
SAMPLE POINT (HYDRANT)			
			DATE: MAY 2022 DWG. NO. 101-1

ALL D.I.P. TO BE PAINTED  
BLUE ON TOP HALF OF PIPE.



### BACKFLOW PREVENTER

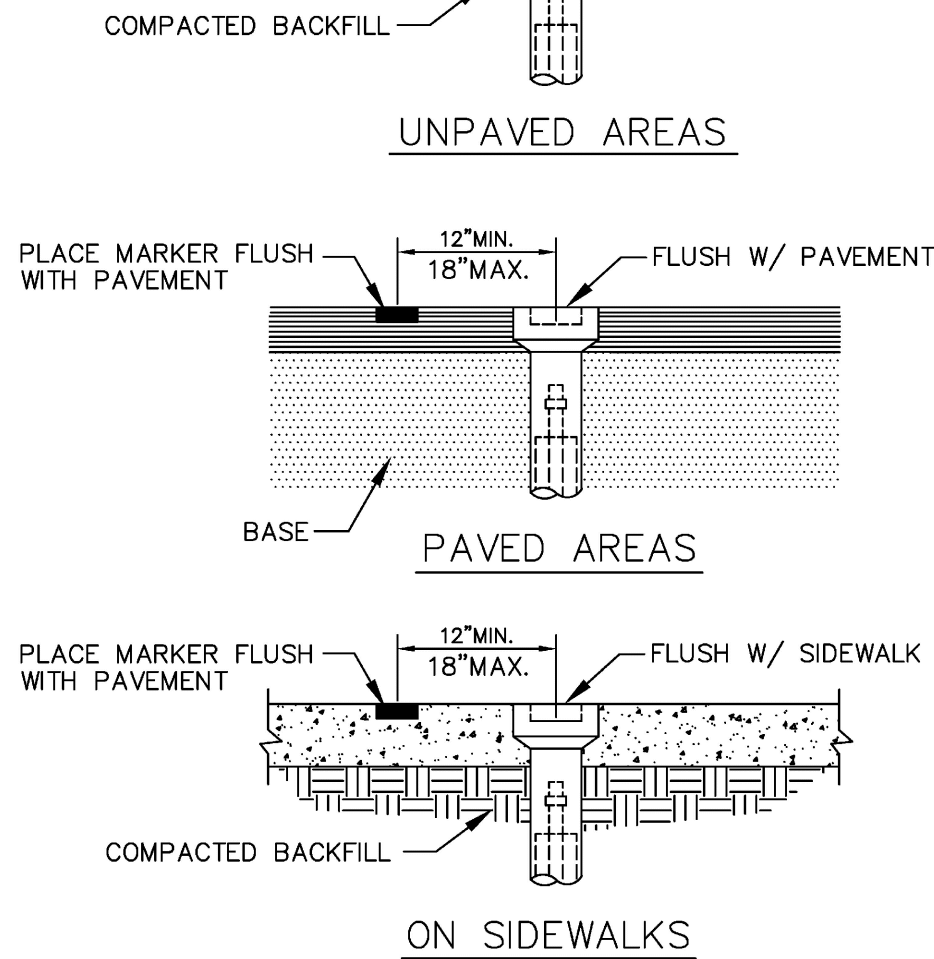
USE MEGALUGS AT ALL PIPE JOINTS 3" AND LARGER  
PLEASE SEE METER INSTALL DIMENSION LIST ON STANDARD NO. 106-4  
SMALL UNITS UNI-STRUT SUPPORT

ENGINEERING STANDARDS 2025			
REVISIONS	BY	DATE	
	S.S.	04-2008	
	S.S.	03-2009	
	S.S.	11-2012	
	S.S.	01-2013	
ENGINEERING DIVISION CITY OF POMPAÑO BEACH			
SCALE: N.T.S.			
BACKFLOW PREVENTER			
			DATE: MAY 2022 DWG. NO. 106-4

AAC

PZ25-12000014

08/20/2025

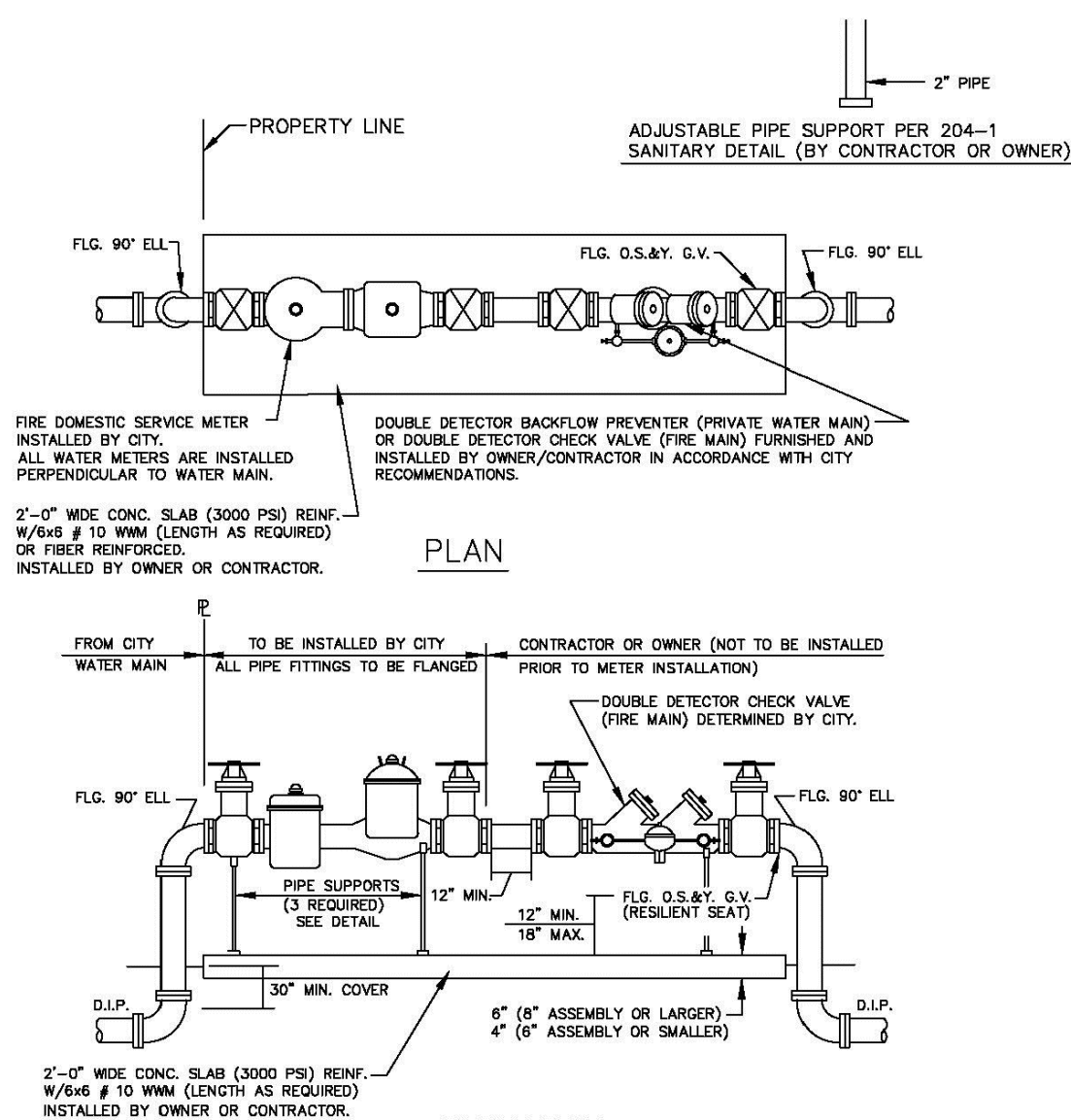


### VALVE BOX SETTINGS

ENGINEERING STANDARDS 2025			
REVISIONS	BY	DATE	
	S.S.	04-2005	
	S.S.	11-2007	
ENGINEERING DIVISION CITY OF POMPAÑO BEACH			
SCALE: N.T.S.			
VALVE BOX SETTINGS			
			DATE: MAY 2022 DWG. NO. 102-1

ALL D.I.P. TO BE PAINTED  
BLUE ON TOP HALF OF PIPE.

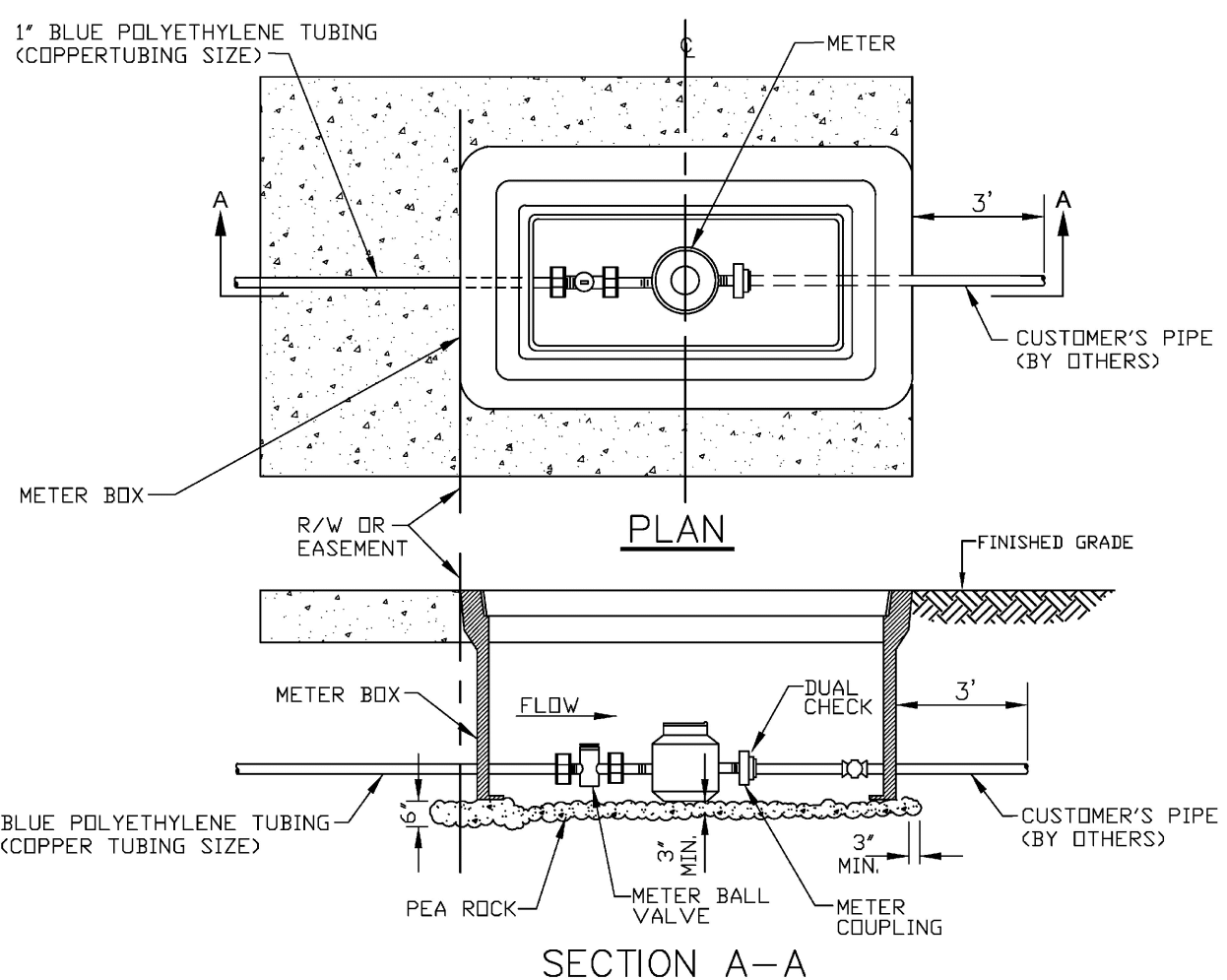
ENGINEERING STANDARDS 2025			
REVISIONS	BY	DATE	
	S.S.	04-2005	
	T.W.	11-2007	
ENGINEERING DIVISION CITY OF POMPAÑO BEACH			
SCALE: N.T.S.			
GATE OR PLUG VALVE SETTINGS			
			DATE: MAY 2022 DWG. NO. 103-1



#### NOTES

- THE BACKFLOW PREVENTOR FOR THE BY-PASS SHALL BE DDCV OR RPZ.
- PLEASE NOTE THAT WATER METERS 3" AND LARGER ARE SUBJECT TO AN APPROXIMATE ORDER  
LEAD TIME OF 60 TO 75 DAYS AFTER FULL PAYMENT. PLEASE CONTACT CUSTOMER SERVICE  
AT 954-786-4637 TO ARRANGE FOR METER PROCUREMENT AND INSTALLATION.
- USE MEGALUGS AT ALL PIPE JOINTS
- PLEASE SEE METER INSTALL DIMENSION LIST ON STANDARD NO. 106-4

ENGINEERING STANDARDS 2025			
REVISIONS	BY	DATE	
	S.S.	05-2011	
	S.S.	11-2012	
	S.S.	12-2013	
	S.S.	11-2016	
ENGINEERING DIVISION CITY OF POMPAÑO BEACH			
SCALE: N.T.S.			
FIRE ONLY METER AND BACKFLOW DEVICE			
			DATE: MAY 2022 DWG. NO. 106-3



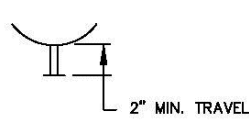
#### NOTES

- ALL METERS WILL BE SUPPLIED AND INSTALLED BY CDPB UTILITIES  
METER HAS IRON PIPE THREAD MALE CONNECTION ON EACH END.
- METER SHALL BE CENTERED IN BOX.
- DUAL CHECK IS SAME SIZE AS CUSTOMER'S SERVICE LINE.

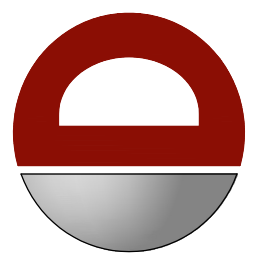
METER SIZE	LAYING LENGTH (IN)	HEIGHT (IN)
3/8"	7.5	4.56
1"	10.75	5.75

### METER BOX INSTALLATION

ENGINEERING STANDARDS 2025			
REVISIONS	BY	DATE	
	S.S.	11-2012	
	S.S.	11-2012	
ENGINEERING DIVISION CITY OF POMPAÑO BEACH			
SCALE: N.T.S.			
METER BOX INSTALLATION FOR 5/8" AND 1" METERS			
			DATE: JAN. 2022 DWG. NO. 105-2

FIRE METERS - OS & Y VALVES, GASKETS & METER						
(NEPTUNE MACH 10 Ultrasonic Meter)						
SIZE	VALVES (2)	GASKETS (4)	METER w/ Strainer	TOTAL LENGTH		
3" w/ 4" X 3" Reducer **	16"	1/2"	30" **	48 1/2"		
4"	18"	1/2"	27 1/2"	46"		
6"	21"	1/2"	33"	54 1/2"		
8"	23"	1/2"	30"	53 1/2"		
10"	26"	1/2"	41"	67 1/2"		
FIRE &/or Domestic Water SERVICE METERS - TEES, OS & Y VALVES, GASKETS & METERS						
(NEPTUNE MACH 10 Ultrasonic Meter)						
SIZE	TEES (2)	VALVES (2)	GASKETS (6)	Meter w/ Strainer	TOTAL LENGTH	
3" w/ 4" X 3" Reducer **	3" X 3" - 22"	16"	3/4"	30" **	68 3/4"	
4"	4" X 3" - 26"	18"	3/4"	27 1/2"	72 1/4"	
6"	6" X 4" - 32"	21"	3/4"	33"	86 3/4"	
8"	8" X 4" - 36"	23"	3/4"	30"	89 3/4"	
10"	10" X 6" - 44"	26"	3/4"	41"	111 3/4"	
*All fittings, valves and meters are flanged & all dimensions are from face of flange to face of flange.						
<b>NOTE:</b> PLEASE NOTE THAT WATER METERS 3" AND LARGER ARE SUBJECT TO AN APPROXIMATE ORDER LEAD TIME OF 60 TO 75 BUSINESS DAYS AFTER FULL PAYMENT. PLEASE CONTACT CUSTOMER SERVICE AT 954-786-4637 TO ARRANGE FOR METER PROCUREMENT AND INSTALLATION. LARGE METERS MUST BE AT MINIMUM ORDERED PRIOR TO INITIAL INSPECTIONS.						

ENGINEERING STANDARDS 2025			
REVISIONS	BY	DATE	
	S.S.	02-2008	
	S.S.	11-2016	
	A.S.	01-2022	
ENGINEERING DIVISION CITY OF POMPAÑO BEACH			
SCALE: N.T.S.			
METER INSTALL DIMENSION LIST			
			DATE: JAN. 2022 DWG. NO. 106-4



DYNAMIC  
ENGINEERING  
SURVEY • TRAFFIC

THIS PLAN SET IS FOR PERMITTING PURPOSES  
ONLY AND MAY NOT BE USED FOR CONSTRUCTION

DESIGNED BY: SRM  
CHECKED BY: EC  
APPROVED BY: AP

PROJECT: LT 20, LLC  
PROPOSED: WATERHOUSE ADDITION  
PARCELS: 14 & 22  
115 NW 16TH STREET  
POMPAÑO BEACH, BROWARD COUNTY, FL 33060

DYNAMIC  
ENGINEERING  
LAND DEVELOPMENT CONSULTING • PERMITTING  
GEOTECHNICAL • ENVIRONMENTAL  
TRAFFIC • SURVEY • PLANNING & ZONING

100 NE 5th Avenue  
Suite 82  
Delray Beach, FL 33483  
T: 561.921.8570  
Offices conveniently located throughout the United States:  
New Jersey • Illinois • Florida • North Carolina • Texas  
Florida Certificate of Authorization No. 32333

www.dynamiccec.com

ÁNGEL PIÑERO

PROFESSIONAL ENGINEER  
FLORIDA LICENSE NO. 88047  
DATE:



PROTECT YOURSELF

ALL STATES REQUIRE NOTIFICATION OF  
ELECTRICIANS, DESIGNERS, OR ANY PERSON  
PREPARING TO DISTURB THE EARTH'S  
SURFACE ADVISE 811.NY.SITE

FOR STATE SPECIFIC DIRECT PHONE NUMBERS VISIT:  
WWW.CALL811.COM

TITLE:

UTILITY DETAILS

SCALE: (H) NOT TO  
(V) SCALE  
DATE: 04/15/2025  
PROJECT NO: 5758-25-01613

SHEET NO:

C4.02

Rev. #:

2